

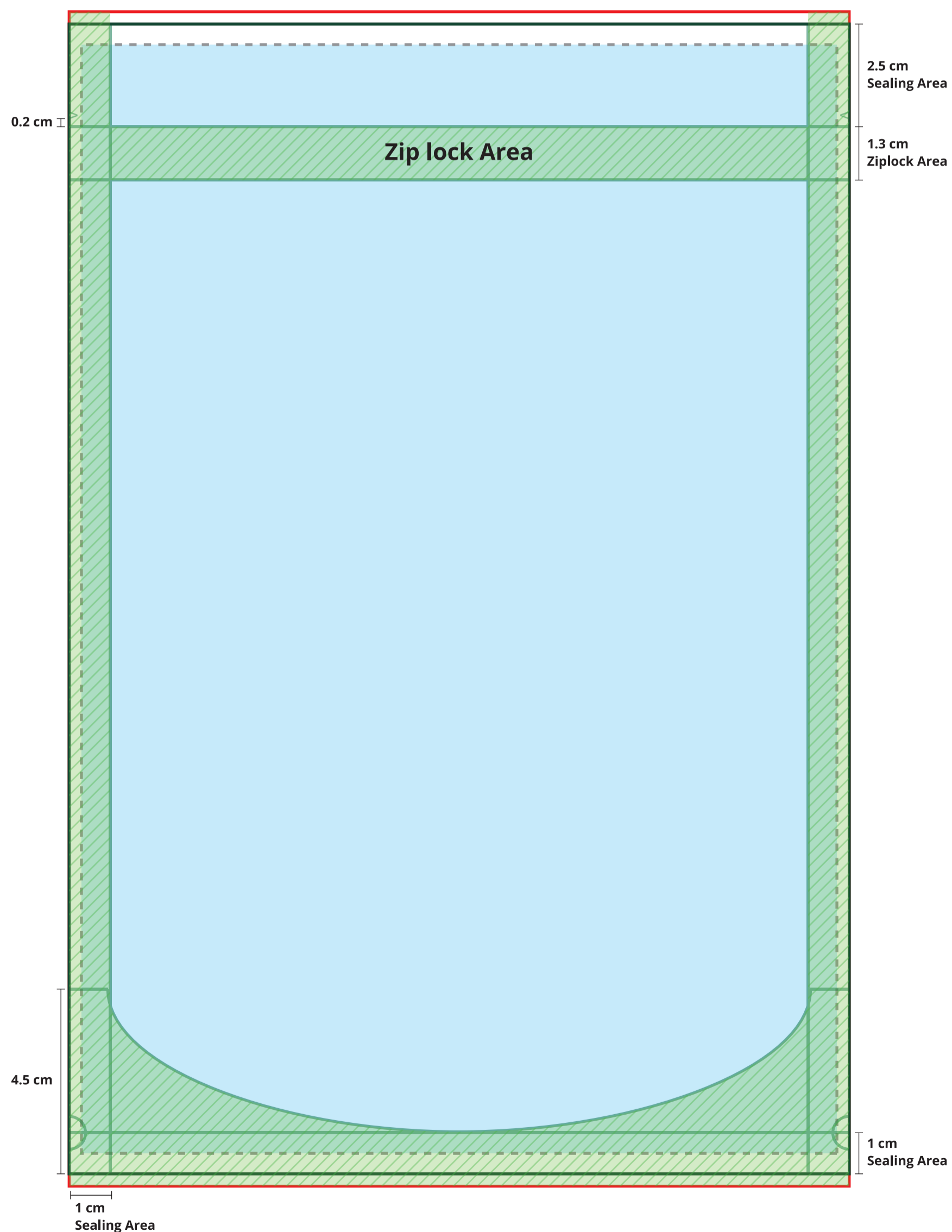
1

2

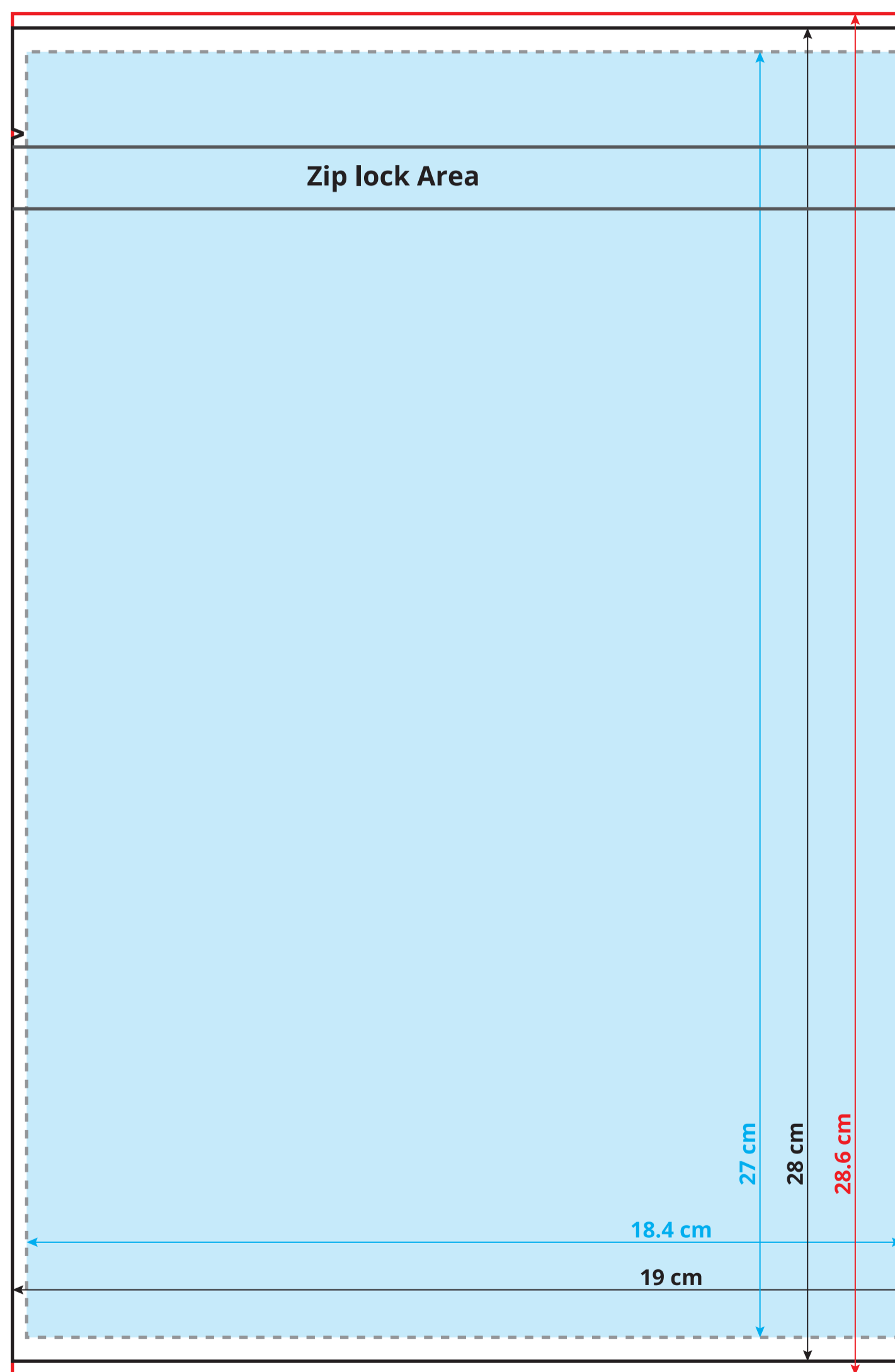


Stand Up Pouch 19(w) x 28(h) x 4.5(l) cm

Sealing, Ziplock and Tear Notch Area



Outer Artwork Area



MUST READ! IMPORTANT

Template Food Standing Pouch - 19 x 28 x 4.5 cm

Format size to be submitted (19 x 28.6 cm)
 You must submit your artwork including 3mm of bleed on top and bottom. To avoid getting a white edge around you printing after cutting. Make sure to extend all background elements (images, graphics, etc.) to the edge of the bleed area.

!! Tear Notch Position

Finished size (19 x 28 x 4.5 cm)
 This will be the dimensions of the final product that we will deliver to you.

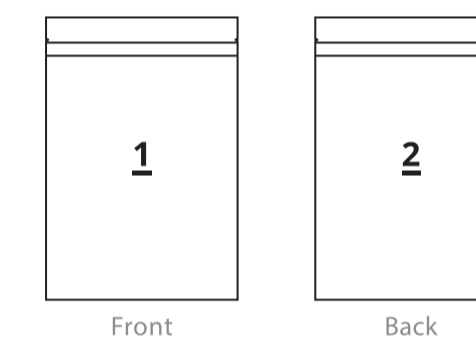
Safe zone (18.4 x 27 cm)
0.3 cm - left and right & 0.5 cm - top and bottom
 Always ensure that all important graphic and text elements stay inside the safety area box. If not, they risk being cut off.

Please DO NOT remove the technical layer if you have any. (The Red layer)

Meaning of line

- Full Bleed
- Trim Line
- - - Safety Line
- Seal Area

Type of Stand Up Pouch



Front

Back